

Masons vigorously support our public schools and every April we are asked to support our local Public schools. Our Grand Lodge Public School slogan for April, 1974 was "Public Education, The Foundation of Democracy"

In Worshipful Master Craig Shaw's message in the Las Palmian, he stated:

April has been again designated as Public Schools Month. A time for all Master Masons to visit the public school of their choice, on the schools Open House Night. When you attend the school make yourselves known; that you are a Master Mason and that you are in full support of our Public School System. And also that you are behind our great leaders who are trying so desperately to keep this Public School System from being infringed upon.

At that time in our history, many of the Principals and teachers were members of the fraternity. There was even an Education Degree Team for those in education who were getting their 3rd Degree.

For many years, we have had a program at our April Stated Meeting where student and educators were invited.

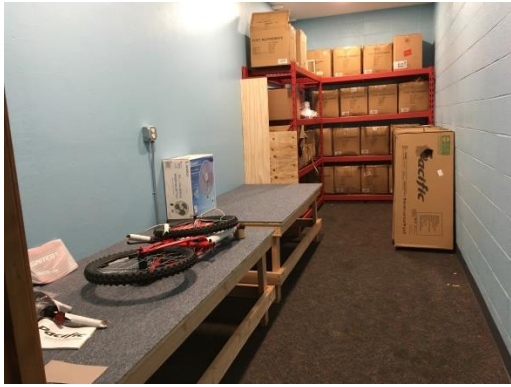
Over 20 years ago we started a program of giving new bicycles, back packs and other items to students in grammar school who have had perfect attendance for the quarter. These prizes are presented at the school assemblies at the end of each quarter and are attended by several members of the Lodge as well as many of the parents and grandparents of the students. If you have available time, you would be very welcome to attend and help give some of these prizes to the worthy students. These prizes are given out in October, January, March and June.

The next bike presentation at Wilson Elementary School (2131 W. Ashlan) and will be on March 19 for grades 1, 2 & 3 and on March 20th for grades 4, 5 & 6. The program starts at around 8:30 in the morning in the school cafeteria. If you can make it, be sure and make your self known to Chuck Bersani and all other members who will be in the left front of the cafeteria.

The next bike presentation for Powers-Ginsburg (110 E. Swift, N W corner of Palm and Ashlan) will be on March 20 for all grades. It will start at 8:30 in the morning and be in the cafeteria. Again, make your self known to the representatives of our Lodge who will be in the North-West corner of the cafeteria.

I have attended many of these presentations and it is always a pleasure to see these students who have not missed a day of class, nor been tardy, hear the names drawn for prizes from our Lodge.

For many years we have given these prizes at Woodrow Wilson Elementary and Powers Ginsburg Elementary. Starting with the 2020-2021 school year, we will add Birney Elementary. Birney Elementary is located at 3034 E. Cornell about 2 blocks north of our Lodge and many of its students walk past our Lodge on their way to school.



The new room for storage and assembly of these bicycles which was created from the back part of the stage in our Lodge banquet room is now completed. I thank all who participated in creating the room as well as Brother Kincade who textured the walls and painted. Many thanks also go to Brother Richard Ehorn who is in charge of Bike committee at Lodge. Brother Ehorn purchases all of the bikes as well as back packs and

other gifts. Brother Ehorn and myself assemble all of the bikes so that Brother Ehorn can take them to the schools.

If you would like to make a tax deductible donation to help fund these worthwhile prizes, you can send a check to our Lodge Secretary (mark Bike Fund on the check) or you can make a donation via PayPal with your credit card from our website.